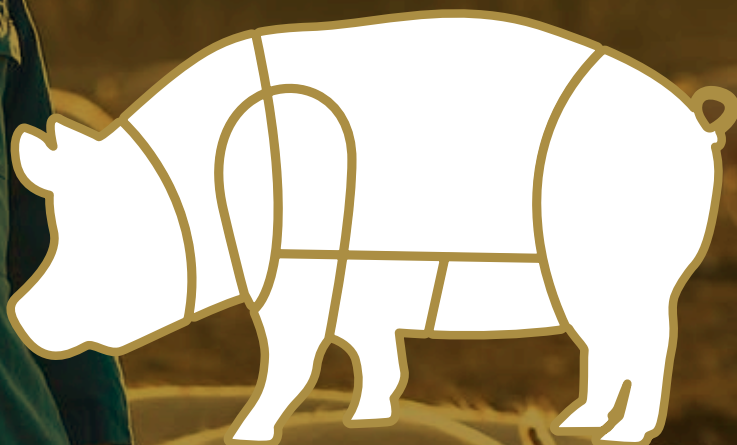


PORK  
*cuts*  
*Our* products

---



  
**CRANSWICK** *plc*  
*Great British Taste*

# Contents

PORKSIDE	3
PORK FORE-END	5
PORK LEG	10
PORK LOIN	16
PORK BELLY	22
PORK FOR MANUFACTURING	25
PORK OFFALS	33
PORK BONES	57





PORKSIDE

001

FULL PORK SIDE WITHOUT HEAD



001A

CARCASS BROKEN DOWN INTO LEG - MIDDLE - SHOULDER

Leg  
Middle  
Shoulder



PORK FORE-END

002

**BONE IN SHOULDER**

**Average weight: 12kg**

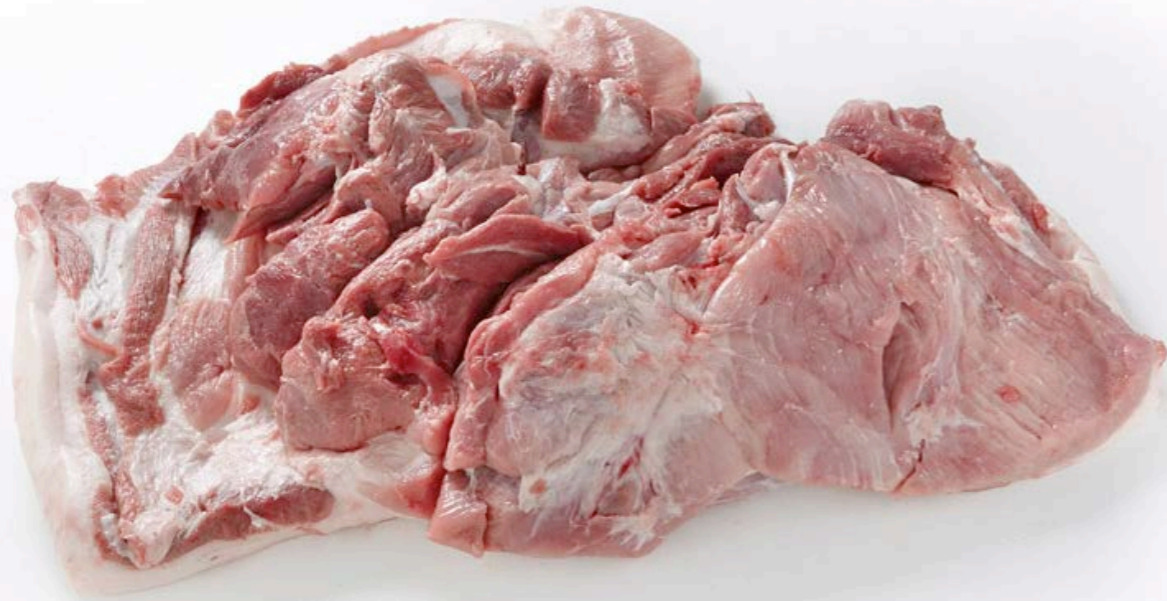


003

**1313**

**Average weight: 3.5kg**





PORK FORE-END

80VL

Average weight: 5kg

004



BONE IN NECK FILLET

Average weight: 3kg

005





PORK FOREEND

006

**BONELESS NECK FILLET**

Average weight: 2.1kg



PORK LEG

007

**BONE IN LEG**

Average weight: 13kg





PORK LEG

009

TOPSIDE

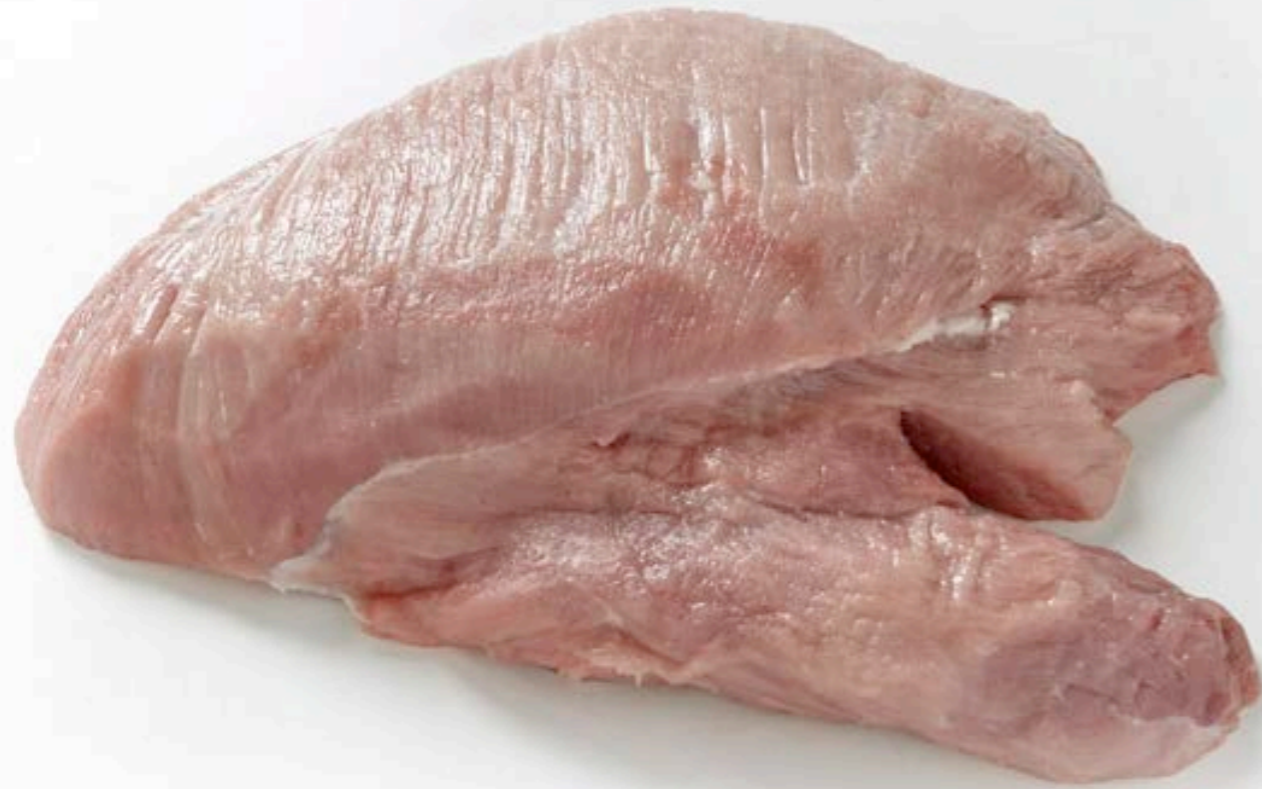
Average weight: 1.4kg



010

FLANKS

Average weight: 0.95kg



PORK LEG

011

SILVERSIDE

Average weight: 1.6kg



012

SHANK

Average weight: 0.3kg





PORK LEG

013

PORK LOIN

014

SEAM BONED LEG

Average weight: 5.5kg

BONELESS RINDLESS LOIN

Average weight: 3.8kg





PORK LOIN

015

RINDLESS BONE IN LOIN

Average weight: 5.6kg

016

TOE BONE IN

Average weight: 6.3kg





PORK LOIN

017

RIND ON BONE IN LOIN

Average weight: 5.9kg



018

PORK MIDDLE BONE IN RIND ON

Average weight: 12kg





PORK LOIN

019

PORK BELLY

020

PORK MIDDLE SHEET RIBBED RINDLESS

Average weight: 7.7kg

PORK BELLY BONE IN RIND ON

Average weight: 5kg





PORK BELLY

021

PORK BELLY BONELESS RIND ON

Average weight: 3kg

022

PORK BELLY BONELESS RINDLESS

Average weight: 3.2kg





PORK FOR MANUFACTURING

023

60/80/98

Average weight: 12kg



024

SHOULDER JACKET

Average weight: 1.36kg





## PORK FOR MANUFACTURING

### RINDLESS JOWLS

Average weight: 0.72kg

025



### BELLY STRIPS

Average weight: 1kg

026





## PORK FOR MANUFACTURING

027

### LEG RIND

Average weight: 0.6kg



028

### BACK RIND

Average weight: 0.35kg





## PORK FOR MANUFACTURING

029

### NECK/U FAT

Average weight: 0.2kg



030

### CUTTING FAT (RINDLESS)

Average weight: 0.17kg



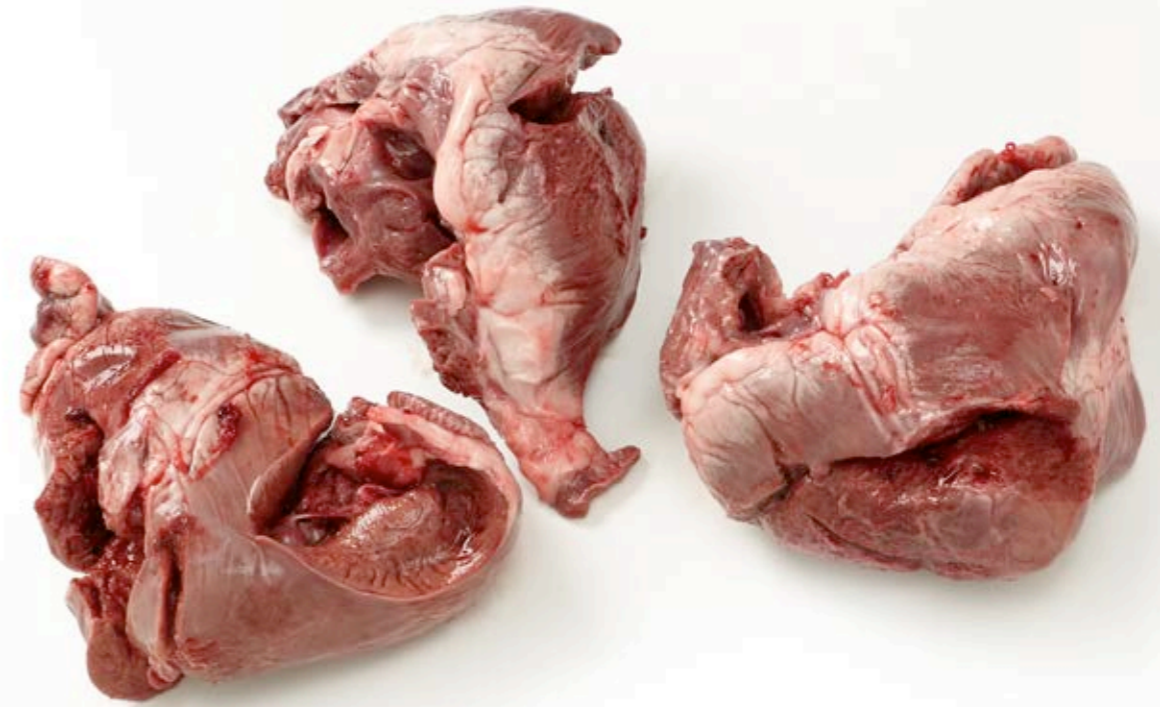


## PORK OFFALS

031

### PORK LIVER

Average weight: 1.7kg



032

### PORK HEARTS

Average weight: 0.39kg





## PORK OFFALS

033

### PORK KIDNEYS

Average weight: 0.2kg

034

### PORK FRONT FEET

Average weight: 0.52kg





## PORK OFFALS

### PORK REAR FEET

Average weight: 0.56kg

035



### PORK FORE HOCKS

Average weight: 0.900kg

036





## PORK OFFALS

037

### PORK TAILS

Average weight: 0.12kg



038

### PORK LARYNX

Average weight: 0.4kg





## PORK OFFALS

039

### PORK STOMACH

Average weight: 0.56kg



040

### PORK UTERI

Average weight: 0.17kg





## PORK OFFALS

041

### PORK TONGUES - SWISS CUT

Average weight: 0.2kg



042

### PORK RUNNERS

Average weight: 0.24kg



## PORK OFFALS

042A

### PORK AORTA

Average weight: 0.3kg



043

### PORK TESTICLES

Average weight: 0.92kg





## PORK OFFALS

### PORK TRACHEA

Average weight: 0.45kg

044



### PORK WEASAND

Average weight: 0.6kg

045



## PORK OFFALS

046

### PORK FLARE FAT

Average weight: 0.90kg



047

### PORK SPLEEN

Average weight: 0.24kg





## PORK OFFALS

048

### PORK CAUL FAT

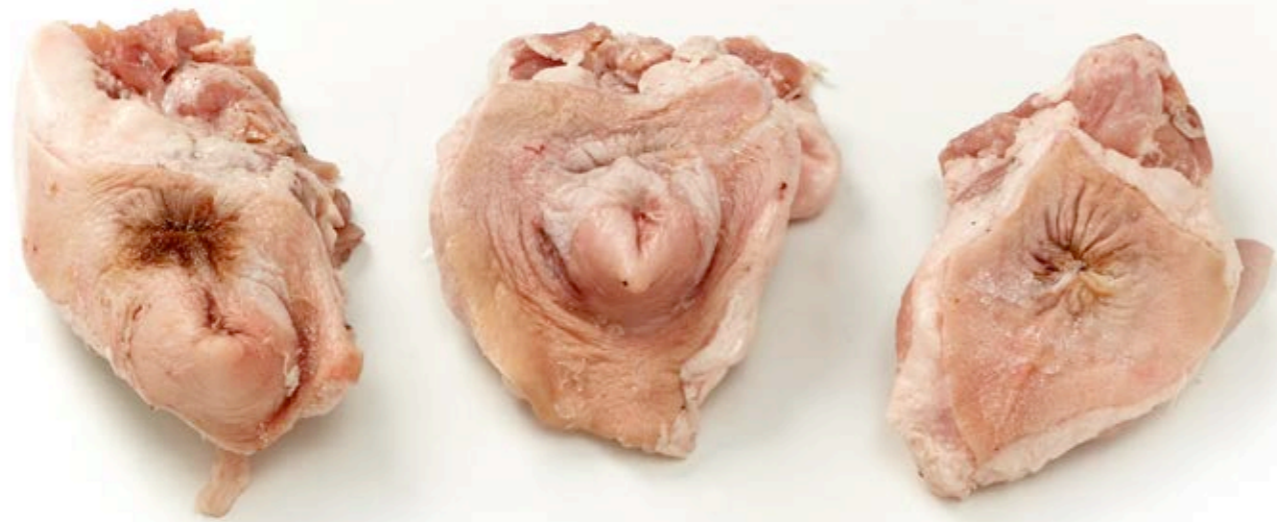
Average weight: 0.09kg



049

### PORK FAT ENDS

Average weight: 0.21kg



## PORK OFFALS

### PORK RECTUM

Average weight: 0.28kg

050

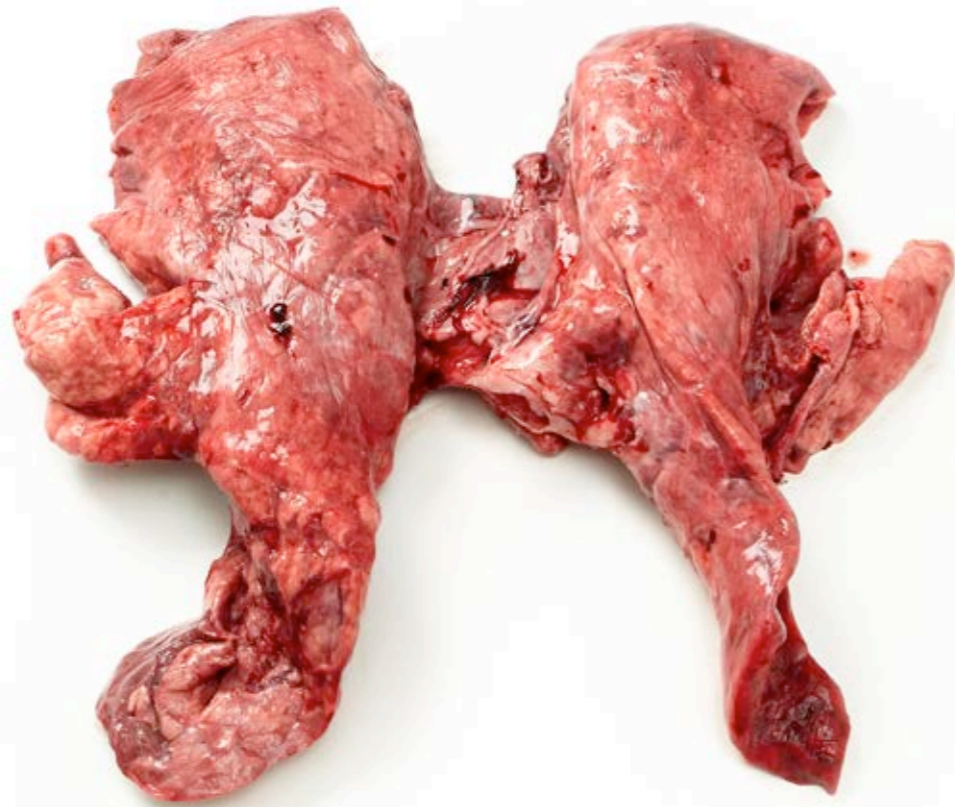


### PORK BLADDER

Average weight: 0.07kg

051



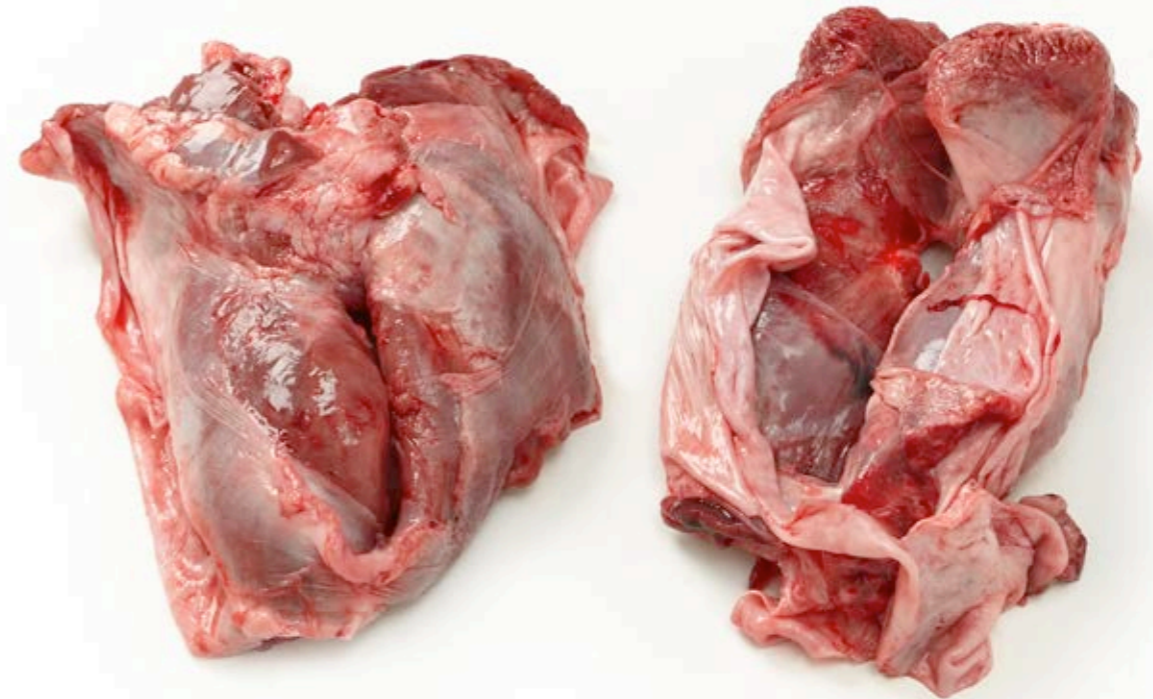


## PORK OFFALS

### PORK LUNGS

Average weight: 0.72kg

052



### PORK SKIRT MEAT

Average weight: 0.22kg

053





PORK BONES - SHOULDER RESIDUALS

054

HUMERUS BONES

Average weight: 0.5kg



055

NECK BONE WITH RIBLET ATTACHED

Average weight: 0.95kg





056

057

**NECK BONE**

Average weight: 0.72kg

**STERNUM BONES**

Average weight: 0.15kg





## PORK REAR FEET PORTIONS

Average weight: 0.9kg

058



## PORK BONES - SHOULDER RESIDUALS

### RIND ON JOWL

Average weight: 0.8kg

059





## MOON BONE

Average weight: 0.04kg

060



## PORK BONES - SHOULDER RESIDUALS

### BLADE BONES

Average weight: 0.26kg

061





## PORK BONES - MIDDLE RESIDUALS

062

### LOIN RIB OFFCUTS

Average weight: 0.06kg

062A

### FLAT BONES

Average weight: 0.48kg





PORK BONES - MIDDLE RESIDUALS

063

BUTTON BONES

Average weight: 0.08kg

064

LOIN BONE STRIP

Average weight: 0.34kg





## PORK BONES - MIDDLE RESIDUALS

065

### BELLY RIB OFFCUTS

Average weight: 0.06kg

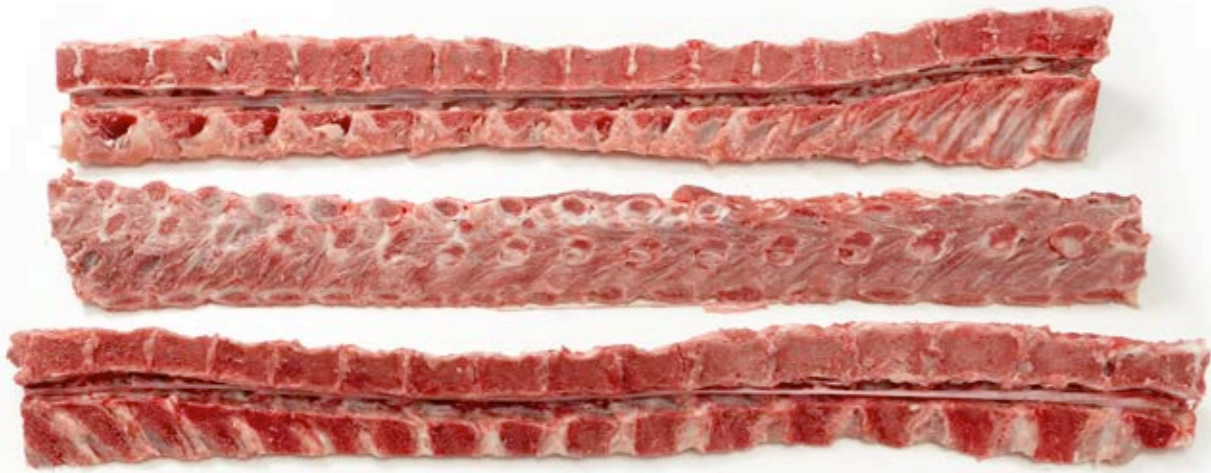


066

### SLICED BELLY RIBS

Average weight: 0.8kg





## PORK BONES - MIDDLE RESIDUALS

067

### CHINE BONES

Average weight: 1.4kg

069

### SOFT BONES

Average weight: 0.08kg





## PORK BONES - LEG RESIDUALS

069

### SHANK BONE

Average weight: 0.29kg

070

### TAIL BONE

Average weight: 0.26kg





## PORK BONES - LEG RESIDUALS

071

### HAICH BONE

Average weight: 0.33kg

072

### PATELLA WITH FAT

Average weight: 0.54kg





## PORK BONES - LEG RESIDUALS

073

### FEMUR BONE

Average weight: 0.48kg



074

### BONE IN HIND HOCK

Average weight: 1kg





PORK BONES - HEAD RESIDUALS

075

**MASK**

Average weight: 0.2kg

076

**EAR**

Average weight: 0.62kg





077

## EAR ROOT

Average weight: 0.4kg



078

## EAR FLAP

Average weight: 0.2kg





## PORK BONES - HEAD RESIDUALS

079

### BONE IN SNOOT

Average weight: 0.46kg

## PORK BONES - HEAD RESIDUALS

080

### CHEEK/PLUM MEAT

Average weight: 0.15kg





## PORK BONES - HEAD RESIDUALS

081

### HEAD

Average weight: 4.02kg